

ECOPELLE

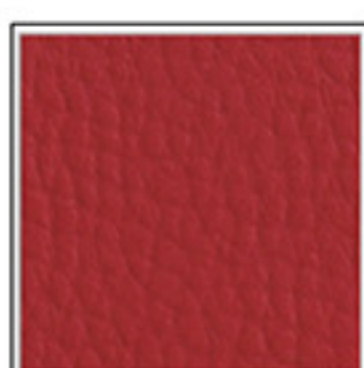
Composizione / Composition: 83% PVC - 15% PL - 2% PU

Resistenza all'abrasione / Abrasion resistance EN ISO 5470 (Martindale): 60.000 cicli /

ATOM CAT. A



A4



A23



A10



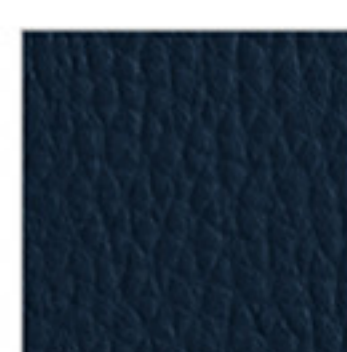
A16



A5



A31

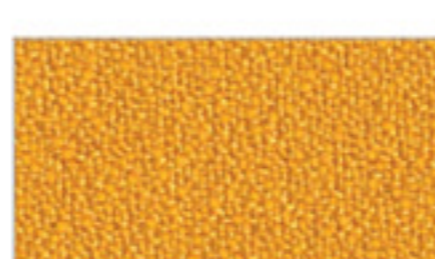


A35

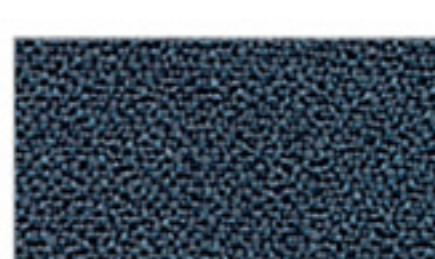
BONDAI CAT. A



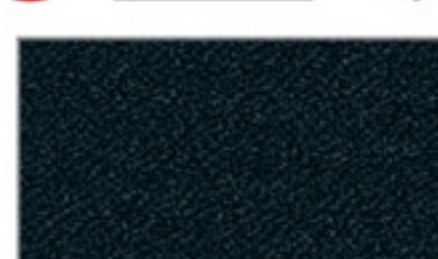
B7041



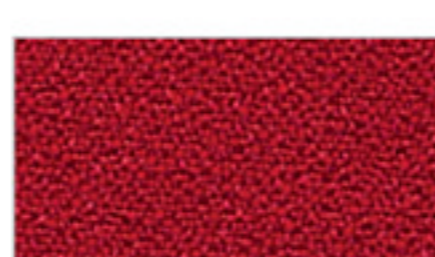
B3013



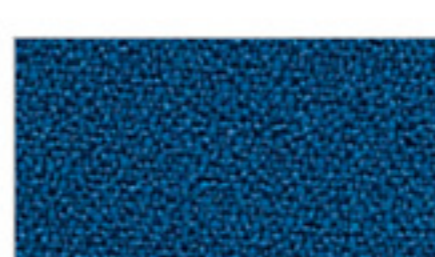
B8010



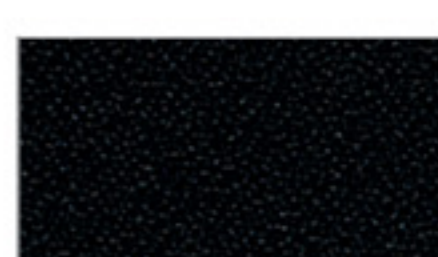
B8013



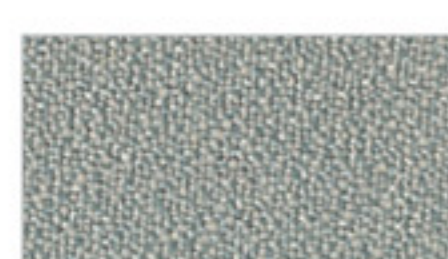
B4011



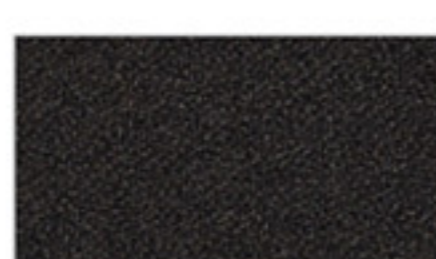
B6016



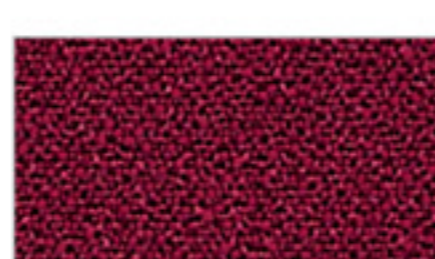
B8033



B8004

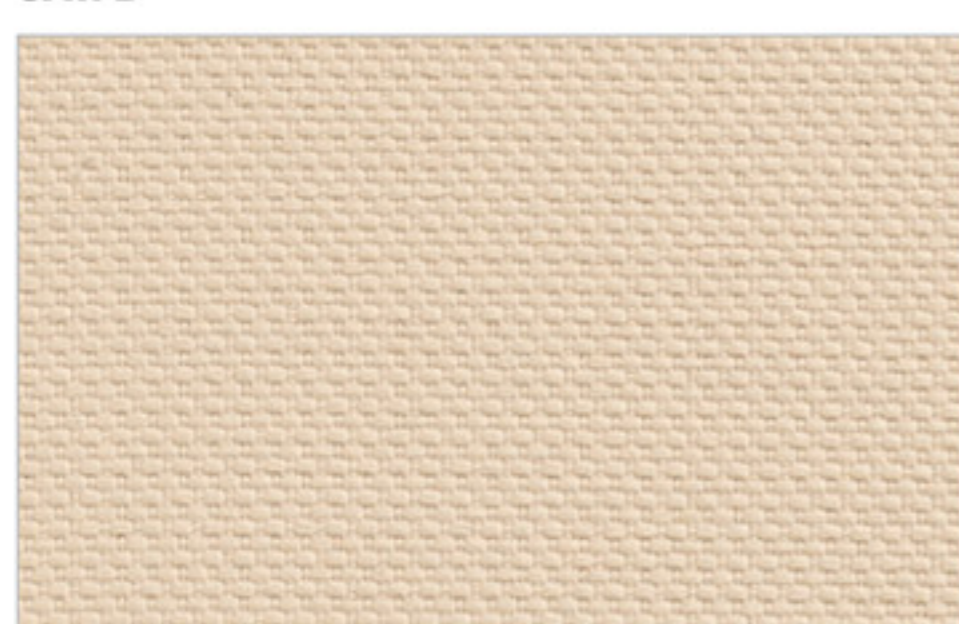


B2020

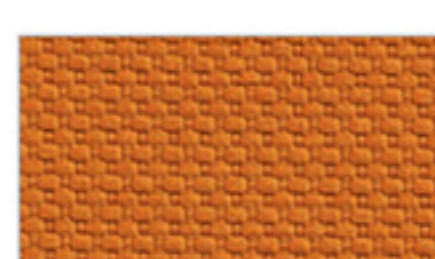


B4007

RADIO CAT. B



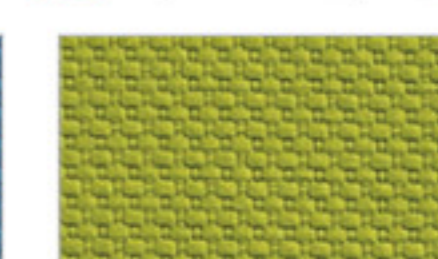
R1008



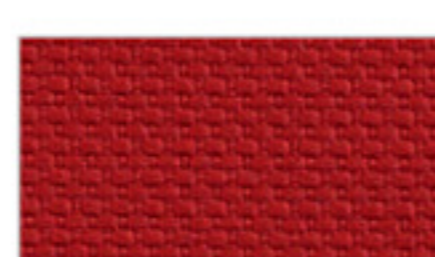
R3082



R6071



R7025



R4028



R6098



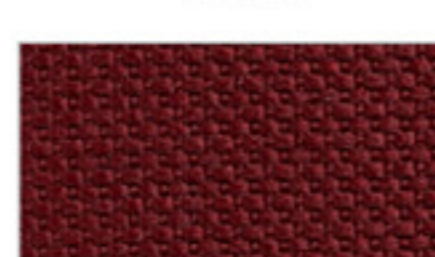
R7008



R8032



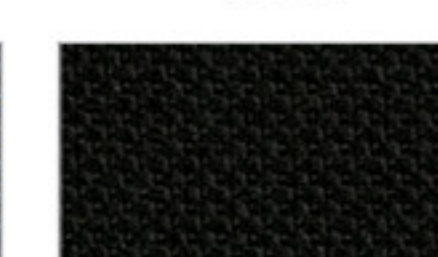
R2036



R4017



R8017



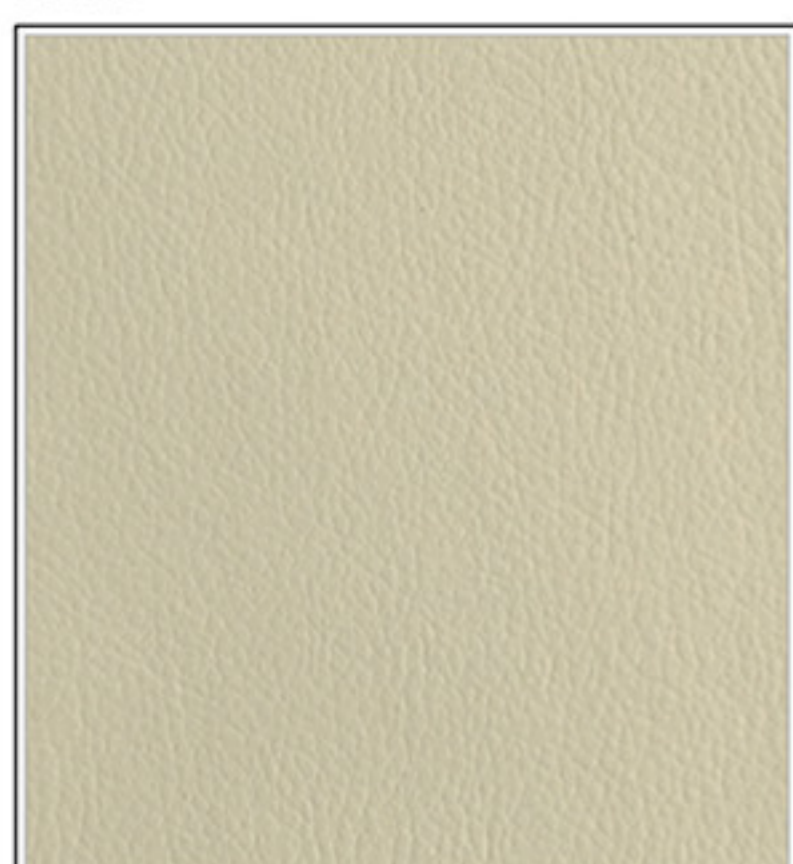
R8033

ECOPELLE IGNIFUGA

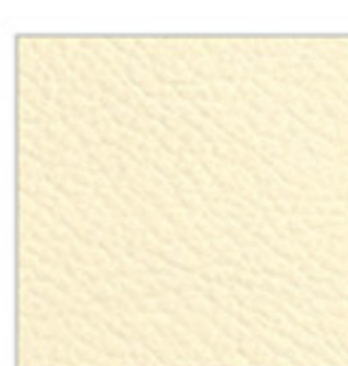
Composizione/Composition: 69% PVC - 20% PL - 10% COT - 1%

Resistenza all'abrasione EN ISO 5470 (Martindale): 50.000 cicli / cycles

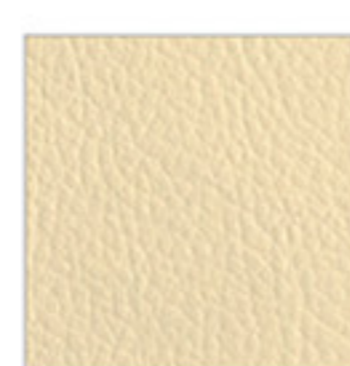
SKILL CAT. B



S10



S2



S26



S12



S30



S17



S36



S34



S39



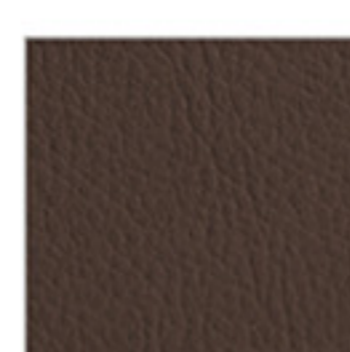
S43



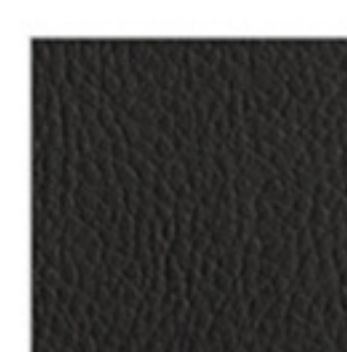
S47



S15



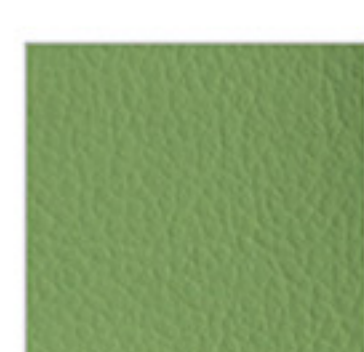
S31



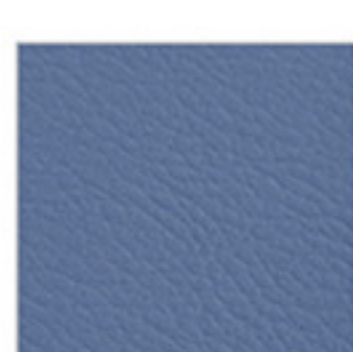
S16



S20



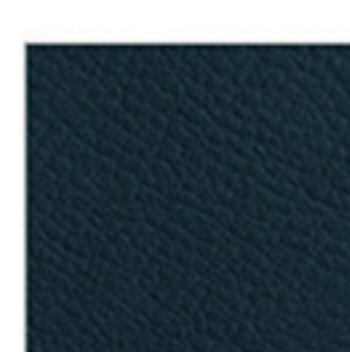
S22



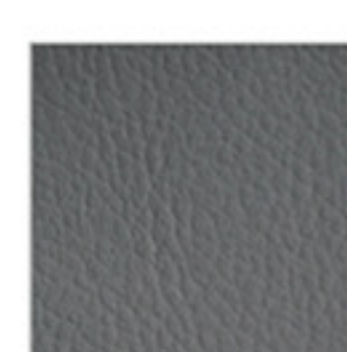
S51



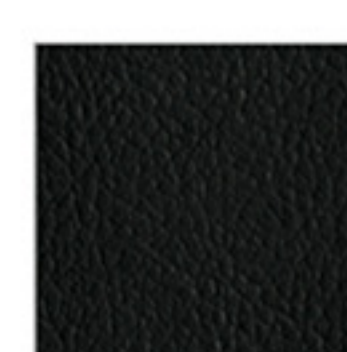
S54



S56



S6



S8